

## Installation of auxiliaries

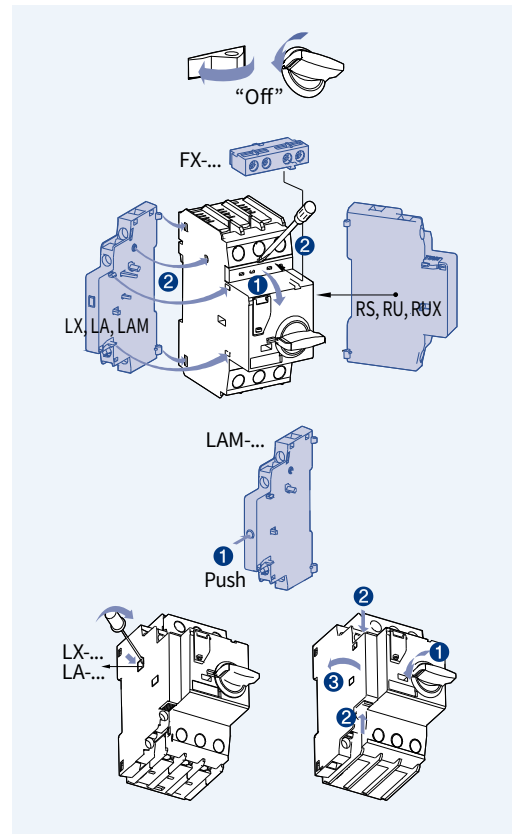
### MMS-32S/H/HI

Note) Refer to page 17 for MMS-32D Installation of auxiliaries.

Be sure to turn off the main switch of MMS before any other action.

- To install FX remove the cover ❶ first.
- 2 each of LX can be installed together.
- Only one of auxiliaries among RU, RS and RUX can be mounted on the right side of MMS.
- Do not give trip signal to RS longer than 10 sec.
- Refer to the possible combination chart for the mounting of LX, LA and LAM on left side of MMS.
- Push the trip button before installation of LAM
- Do not operate the alarm contact point (LA) when the operation switch is in the trip position.
- Remove the indicated part in the fig. before the additional installation of LX
- Be sure to turn off the main switch of MMS before the separation.
- Push softly the separation button on the side of the auxiliary and pull it.

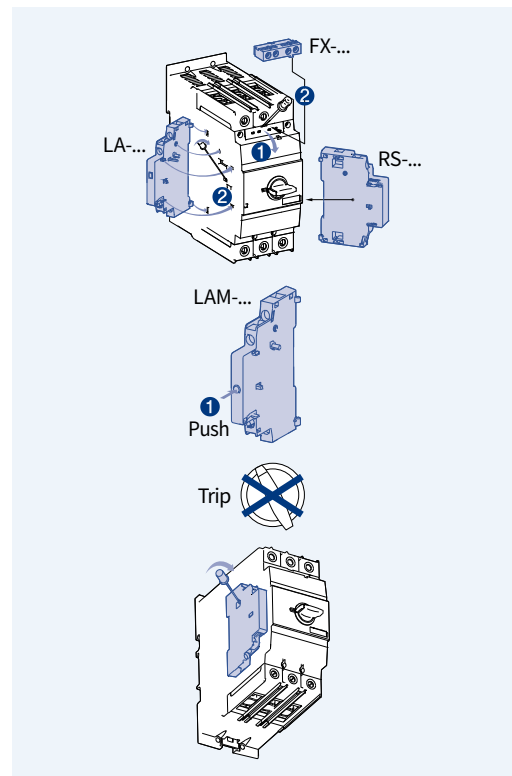
• Please make sure to choose proper LA before use because LA for MMS-32 and MMS-63/100 is different.



### MMS-63, 100S/H/HI

- To install FX remove the cover ❶ first.
- 2 each of LX can be installed together. (only 1 each for MMS-63)
- Only one of auxiliaries among RU, RS and RUX can be mounted on the right side of MMS.
- Do not give trip signal to RS longer than 10 sec.
- Refer to the possible combination chart for the mounting of LX, LA and LAM on left side of MMS.
- Do not use with LA... (32) It is only for MMS-32.
- Push the trip button before installation of LAM
- Do not install LA in the status of TRIP of MMS-100
- Remove the indicated part as shown in the above fig. before the additional installation of LX
- Be sure to turn off the main switch of MMS before the separation.
- Push softly the separation button on the side of the auxiliary and pull it.

• Please make sure to choose proper LA before use because LA for MMS-32 and MMS-63/100 is different.



## How to Install and reset RUX

### Installing

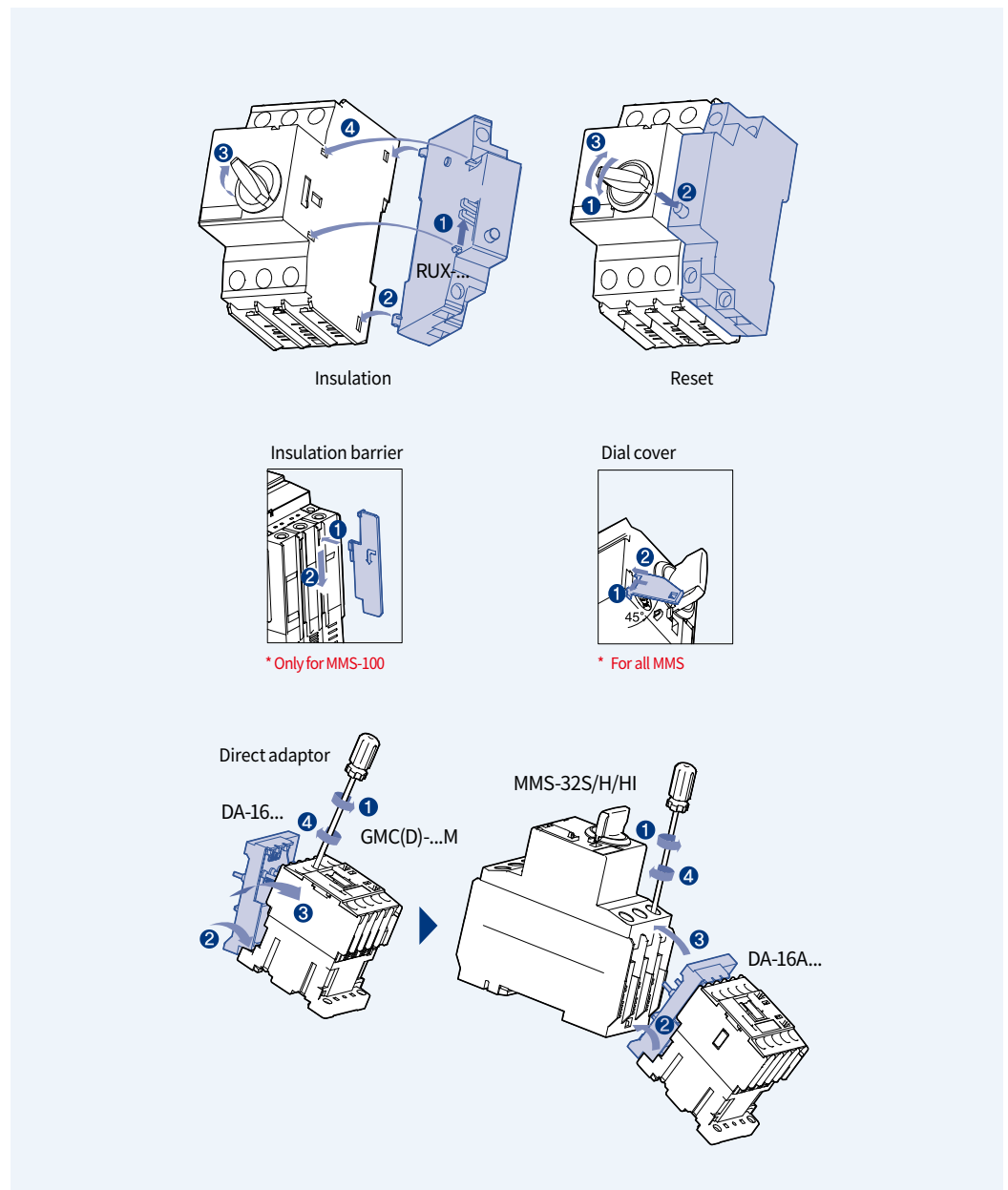
- (1) Check if the trip button of RUX is "UP". If not, push the side lever ❶ to come it up.
- (2) Fit the both lower hooks ❷ into the MMS.
- (3) Rotate the handle of MMS to the 20 to 30 degree ❸ to on direction and keep it.
- (4) Fit the both upper hooks ❹ into the MMS.
- (5) Input power to the RUX.
- (6) Turn on the handle of MMS.

### Resetting

The trip button of RUX does not come "UP" in the event of tripping due to undervoltage.

To turn on the MMS after the tripping ❶ turn off the MMS and check if the trip button of RUX comes "UP".

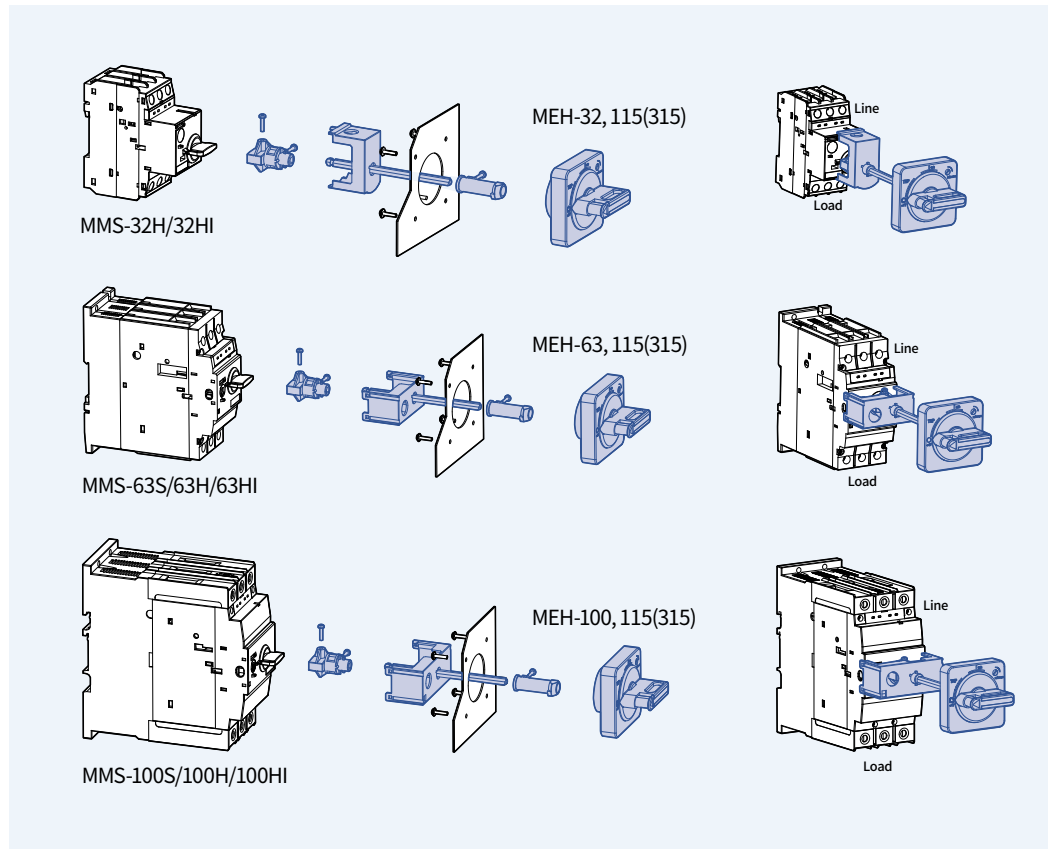
- ❷ push the trip button ❸ turn on the MMS



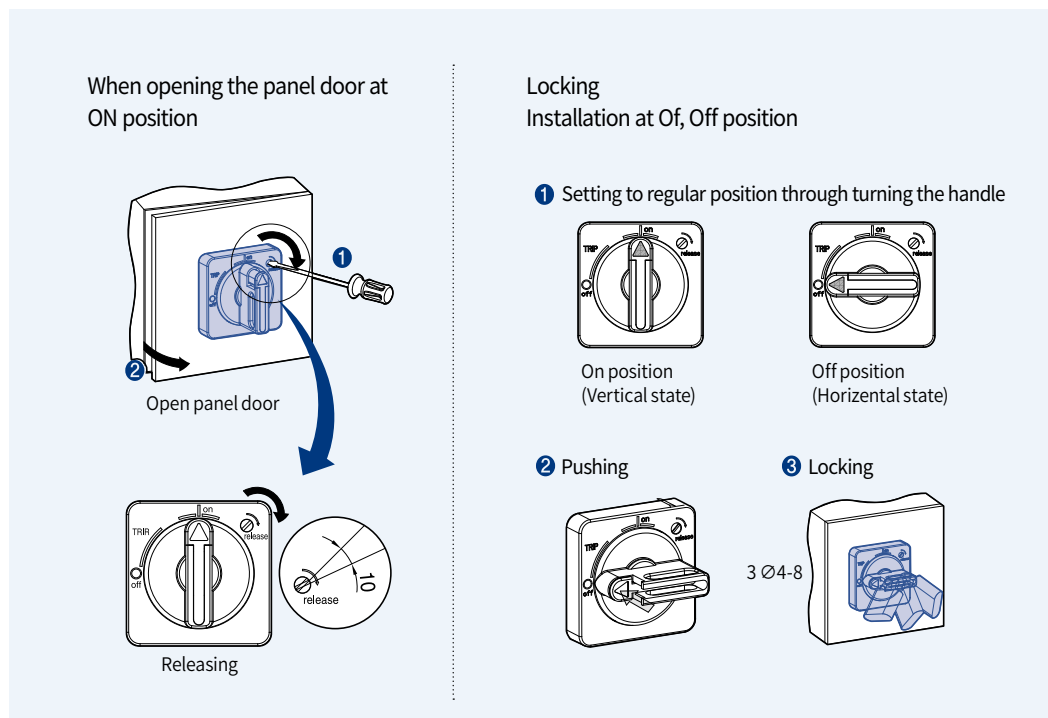
# Technical Information

## Installation of auxiliaries

### E-handle structure



### E-handle locking device



E-handle Installation

The diagrams illustrate the installation of the E-handle for three different motor starter models:

- MEH-32/63/100:** Shows the handle being inserted into the motor starter body. Step 1 shows the handle being pushed in, and step 2 shows it being fully seated. A torque of 7kgf.cm is applied to the handle screw.
- MEH-32:** Shows the handle being inserted into the motor starter body. A note states: "Projection should be passed through the hole when assembling".
- MEH-63/100:** Shows the handle being inserted into the motor starter body. A note states: "Projection should be passed through the hole when assembling".

Additional diagrams show the handle being installed into the main cover of the motor starter. For MEH-32 and MEH-63/100, the handle is inserted into the cover, and a torque of 7kgf.cm is applied to the handle screw. For MEH-63/100, there are four 'Click' indicators on the cover, and a 'Caution' symbol is present.

**Restricted fact of Assembling**  
 Assembling is available for MMS-63/100 with 4 holes on the main cover which is produced after June, 2007 based on manufacturing date.

E-handle operating test

The diagrams illustrate the operating test for the E-handle:

- Reset:** The handle is rotated to the 'Reset' position (1).
- On:** The handle is rotated to the 'On' position (2). A note states: "At On position Panel door can not be opened".
- Off:** The handle is rotated to the 'Off' position (3). A note states: "At Trip position Panel door can not be opened. At Off position Panel door can be opened".

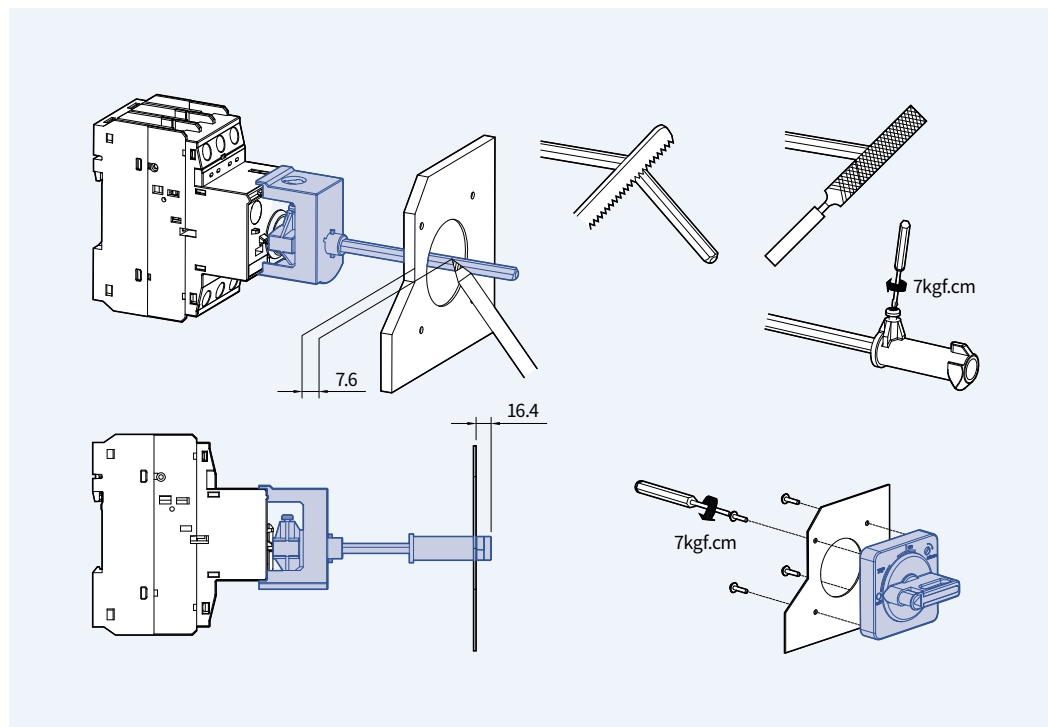
**※Caution**  
 If trying to open the door at ON or Trip position, locking knob can be damaged.

# Technical Information

## Installation of auxiliaries

[mm]

E-handle  
cutting off the shaft &  
applying the handle



Enclosure

